

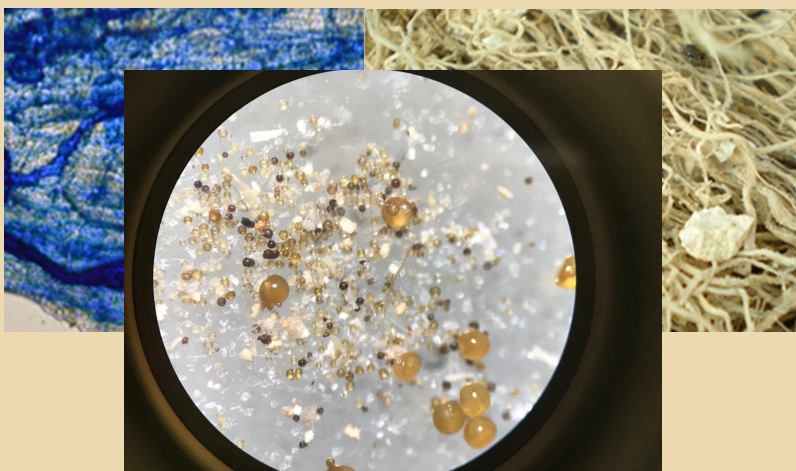


# soilcure<sup>ENDO</sup> A+<sup>TM</sup>

**soilcure ENDO A+<sup>®</sup>** is a liquid biological consortia of microorganisms that contains beneficial bacteria and mycorrhizae that promotes soil health and stimulate the plant to produce its own defenses through the production of phytoalexins; better phosphorus and potassium absorption, increased root growth, and greater yield.



## PERFECT SYNERGY BETWEEN BACTERIA AND FUNGI TO REDUCE THE IMPACT OF BIOTIC AND BIOTIC STRESS



**soilcure endo a+<sup>®</sup>** acts on the plant's rhizosphere to create a healthy environment for root growth directly in the meristematic zone. Soil biodiversity fostered by **soilcure endo a+<sup>®</sup>** promotes soil health, improved organic mineralization, healthier plants, and better yields.

## soilcure endo a+<sup>®</sup> BENEFITS

- \*Improved nutrient use efficiency
- \*Improved organic mineralization, soil structure, healthier plants, and yields.
- \*strains of beneficial bacterial and mycorrhizae
- \* Improved nutrient uptake through hormonal interactions
- \* Mineralization and Solubilization
- \* Improve rhizosphere microorganisms that promotes soil health
- \* Stimulate the plants to produce their own defences
- \* Demonstrated to **solubilize organic phosphate and potassium**
- \* Systemic acquired resistance (SAR)

# maximizes profits with optimal nutrient uptake and biotic and abiotic stress impact

## ACTIVE INGREDIENT:

-bacterial consortium and mycorrhizae .

## RATE:

Plantation/Transplantation: 1-2 pints per acre in the irrigation system, for a greater impact on soil health repeat the same dose every 3 weeks.

**soilcure endo a+®** can be blended with liquid fertilizers and other soil amendments **soilcure endo a+®** liquid formulation can be applied by incorporation, drip or drench applications, as well as impregnation to substrates.

## RATE RECOMMENDATIONS TANK MIXTURES

When **soilcure endo a+®** is tank mixed with other products for the same purpose, apply 1 pint /acre+the labeled rate of the tank mixture partner.

## METHODS TO PREPARE AND APPLY

**soilcure endo a+®** be sure to calibrate your application equipment before applying . Shake well before use and store in a cool, dry place out of direct sunlight keep lid closed when not in use. **soilcure endo a+®** It can be mixed with other liquid fertilizers and soil conditioners that will be used in spray equipment; hose-end sprinklers and other fertigation equipment. Shake well before use.



Superior Nutrient Cycling

Better Soil Health

Better Plant Yield

Better Results

Maximum Profits

Healthy Bacteria

**WARNING:** Follow the instructions in the Material Safety Data Sheet for safety precautions and cleaning and maintenance of PPE (Personal Protective Equipment). If there are no instructions for washable items, use detergent and hot water. Not suitable for human consumption. Please keep it away from children.

See Instructions for application methods and rates.

## healthier plant



**soilcure endo a+®** better return of the investment

control

**soilcure endo a+®**



**soilcure endo a+®** is an eco-friendly liquid microbial amendment that supports soil and plant health.



**MICROBES**  
BIOSCIENCES

Microbes BioSciences  
1544 Sawdust Road. Ste 505  
The Woodlands, Texas 77380  
281.367.7500

[www.microbesbio.com](http://www.microbesbio.com)